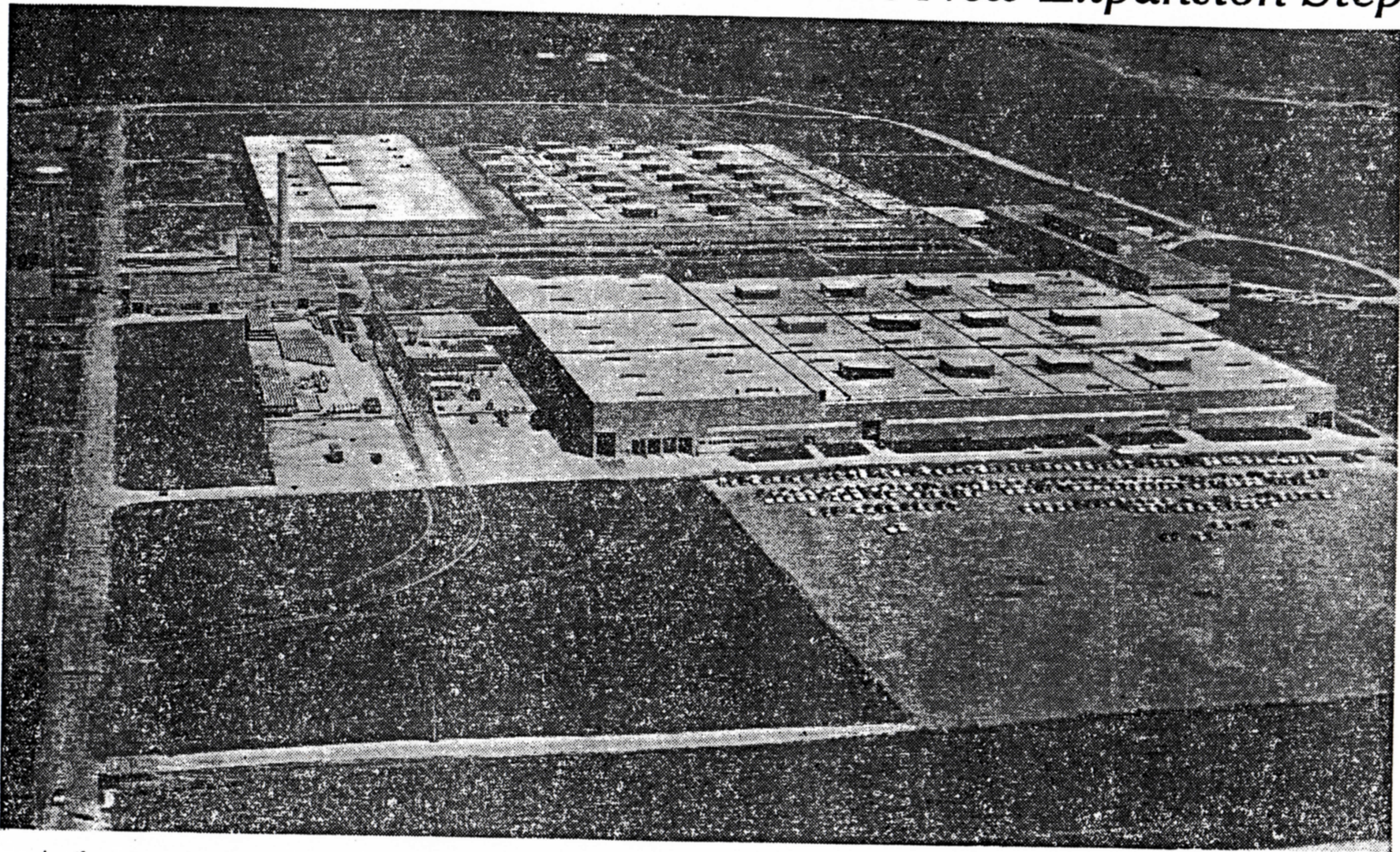


Giant Western Electric Plant to Take New Expansion Step



—World-Herald Aerial Photo.

Another stage in the development of the giant Western Electric plant near Millard will take place in about two weeks when the administration building is occupied. This is the smallest of three interconnected buildings shown

above; it is at right. In foreground is the cable plant, where pilot production began last April. The bigger building in background is the cross-bar plant, last structure to be started. Addition

of new employees—including transfers from W.E. plants elsewhere—has increased recently, and by 1960 the pay roll will total about four thousand persons, the company has said.