

Welcome
to our open house
August 16, 1998



Lucent Technologies
Bell Labs Innovations



Omaha Works
40th Anniversary
1958 - 1998

Welcome

It is with great pride that I welcome you here today in celebration of the Omaha Works' 40th Anniversary. This milestone comes at perhaps the most exciting of times in our company's history.

Marked changes to the Works' physical appearance both inside and out, our new Global Provisioning Center (GPC) warehouse, and new products and machinery instantly signal that—to paraphrase a popular car manufacturer's ad—"this isn't your parents' Western Electric." Since Lucent Technologies was spun off from parent AT&T, our new company's stock has more than quadrupled, leaving analysts marveling and stockholders smiling. The growth of sales to countries all over the world continues to exceed expectations. Today, the Omaha Works alone can boast of \$1 billion in sales.

At 40, the Omaha Works is a vibrant, competitive manufacturer whose future, indeed, is bright. What makes it bright is the culmination of the talents, innovation and dedication of a work force over the course of four decades, no matter how challenging or how fast changes have occurred within the communications industry.

That's what this celebration is really all about: Not so much about products and machines and the brick walls that house them, but of the Omaha Works people themselves. This is a day for Works employees to share with families and friends their pride in a business they helped build and position for growth well into the future.

Enjoy yourselves in today's activities, and thanks for participating in this historical event.



Les Cole

Connectivity Solutions Vice-President

Hosts and hostesses

Works employees and retirees serve as greeters at the front lobby and as tour guides. If you need assistance, ask one of them for help. They're wearing bright red T-shirts imprinted with a golden sparkler and our 40th Anniversary theme logo, "Our future is bright!"

Special attractions

Tour the plant—You'll find big changes in our newly remodeled offices and shops. You'll want to see our newest facility, the Global Provisioning Center (GPC) warehouse. The GPC's warehousing and distribution operations allow us to ship products directly to customers all over the world much faster and at less cost. Don't miss ETOP's (Enhanced Training Opportunities Program's) state-of-the-art Machine Tool Technology or Electronics Technology Programs laboratories in Building 30, or the computer training classroom and study labs in the ETOP Learning Center. Our Product Display Center, showcasing our latest products, is also open for your viewing, while the Pioneer Gift Shop is open for business.

Display booths—The Lucent Technologies Heartland Pioneers and the Omaha Works WEOMA Club have hundreds of projects and activities planned throughout the year. Stop by their displays in the auditorium to find out more. While you're there, get a quick trip down Memory Lane at the Lucent Archives display featuring artifacts and information on the way things were in the olden Western Electric and AT&T days.

Video show—A multi-image, musical production starring Omaha Works people is scheduled all afternoon in the auditorium. You're sure to see someone you know...maybe even you!

Entertainment—Listen, and what do you hear under the big tent in the Works courtyard? Alternating music performances by the Rivertown String Band and the

Turfmen Irish Band. Watch for Corny Clowns, a magician, and face painters leaving their (washable) marks on willing youngsters.

Classic and classy—The biggest display (weather permitting) we've ever had of antique and classic cars—and motorcycles, too—is assembled at the north end of the courtyard. They're the pride and joy of Works employees. Look, reminisce, but don't touch!

Refreshments—A place this big, you can get the "munchies." Not to worry. Under the courtyard big tent we have fun snacks to eat, including popcorn, cotton candy and snow cones. Don't forget a beverage (you're going to work up a thirst!).

Anniversary mementos & exit—Gifts for adults and children may be picked up as you leave through the east and west office (Building 20) exits.

First aid

A first aid station is located in Building 42 at the north end of the courtyard. The Works Fire and Rescue Brigade crew is on duty, ready to handle everything from scratches to emergencies. A host or hostess can direct you to the station should you need help.

Lost and found

All lost and found articles are handled in our main lobby. Contact a host or hostess for assistance.

For your safety

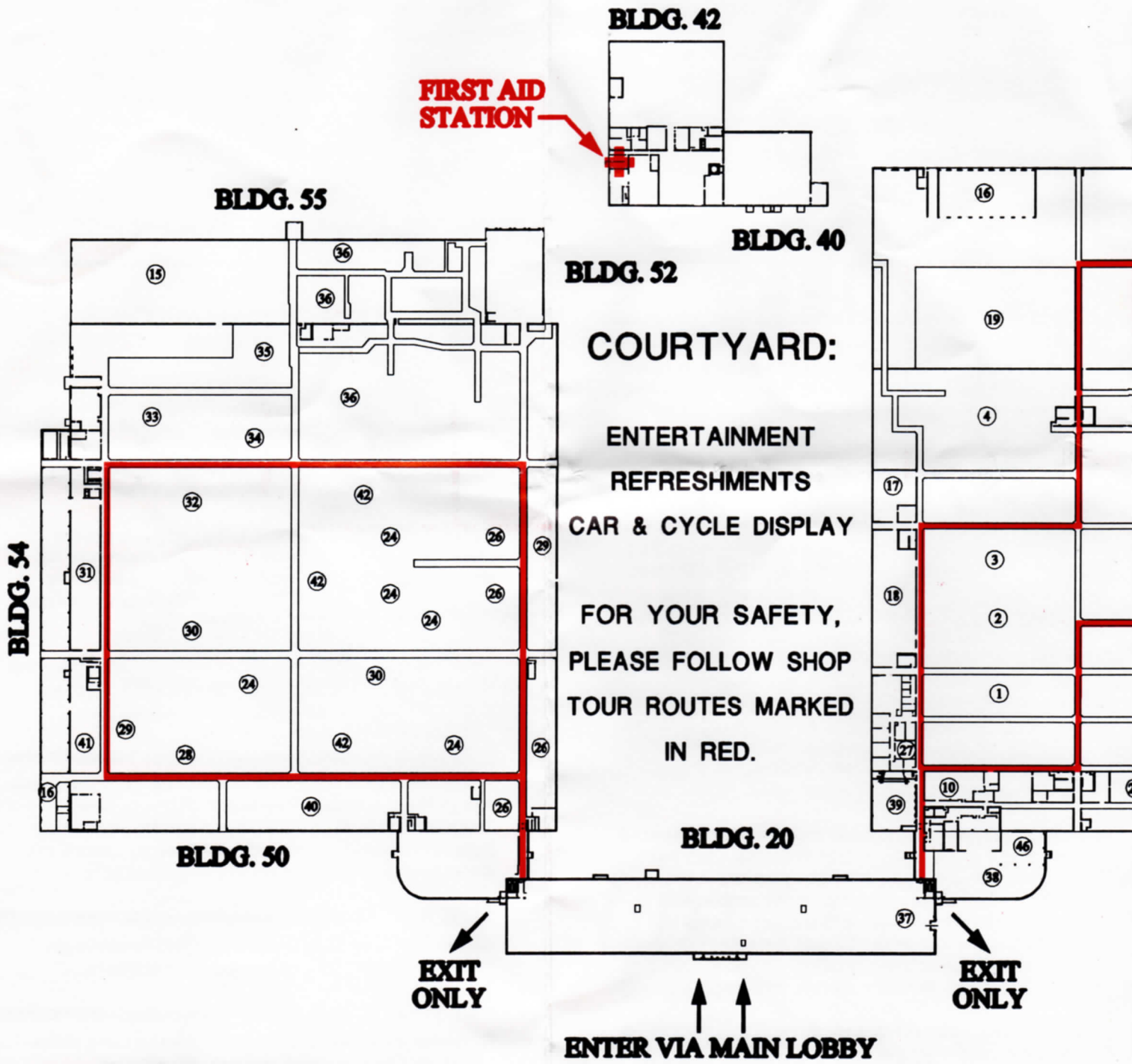
To ensure your safety, please stay on the main aisles when touring the shops and GPC warehouse. Remember, too, that smoking is permitted *only* in designated smoking areas outside in the courtyard (adjacent to building entrances).

Map of facilities ➤

1. DSX ASSEMBLY
2. 66, 78, 89, 93 & 112 CONN. BLKS.
3. CENTRAL OFFICE CONN. & PROTECTORS
4. 80 TYPE CABINET ASSEMBLY
5. CENTRAL STORE
6. POWDER PAINT
7. CABINET FABRICATION
8. CABINET ASSEMBLY
9. PLATING

10. MACHINE TOOL TRAINING CENTER
11. INJECTION MOLDING
12. RETURN GOODS PROCESSING
13. UNIT PROTECTORS
14. METAL PIECE PARTS FABRICATION
15. RECEIVING
16. SHIPPING
17. QUALITY ASSURANCE
18. CENTRAL PACK

19. HIGH
20. MISCE
21. TOOL
22. EDM
23. BEP
24. EW&C
25. PAINT
26. REEL
27. BELL



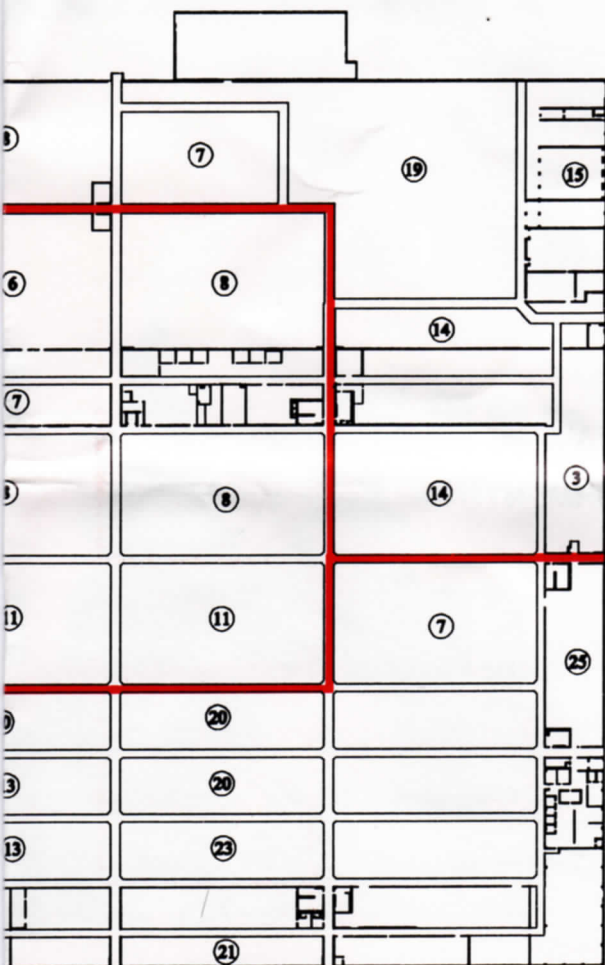
SMOKE FREE BUILDINGS:
NO SMOKING, EXCEPT FOR OUTSIDE DESIGNATED AREAS.
PLEASE REMAIN IN AISLES.
NO CAMERAS ALLOWED IN PLANT.

USE STORAGE
 PLANEOUS CONNECTORS
 CONSTRUCTION
 MACHINES
 ASSEMBLY
 JACKETING

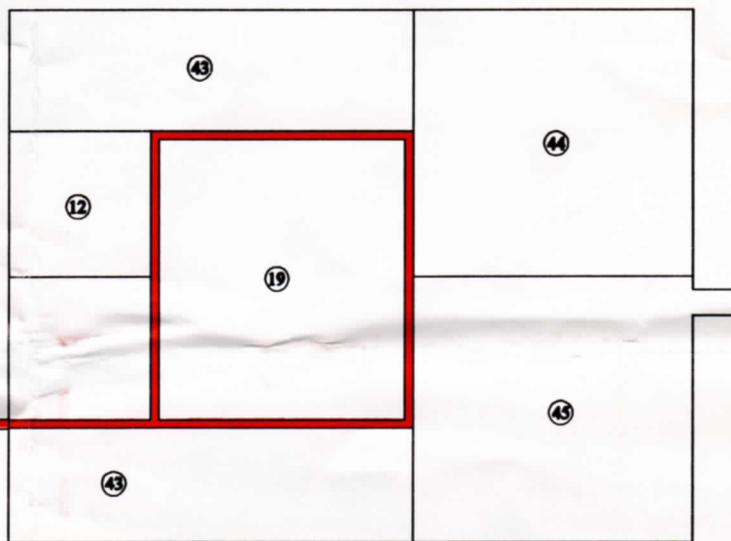
28. EW&C INSULATING
29. CENTRAL OFFICE JACKETING
30. PVC CABLE STRANDING
31. PLASTIC STORAGE
32. PVC WIRE INSULATING
33. ROD BREAKDOWN
34. CENTRAL WIRE PLATING
35. FINE WIRE DRAWING
36. 700 SERIES CABLE

37. PRODUCT DISPLAY CENTER
38. MAIN CAFETERIA
39. AUDITORIUM
40. LOOSE WIRE
41. CABLE REWIND & TEST
42. WIRE TWISTING
43. FLOOR STORAGE
44. DOMESTIC STAGING
45. INTERNATIONAL STAGING
46. ETOP LEARNING CENTER

LABS



BLDG. 30



BLDG. 60
GLOBAL PROVISIONING CENTER (GPC)

OFFICE :

- 1ST FLR - ACCOUNTING, PRODUCTION CONTROL, PURCHASING, PERSONNEL, MEDICAL & INFORMATION SYSTEMS.
- 2ND FLR - ENGINEERING & QUALITY ASSURANCE.
- 3RD FLR - ADMINISTRATIVE OFFICES.
- 4TH FLR - COMPUTER ROOM, LABS, TRAINING & PRINT SHOP.

