



AT&T

**Omaha Works
Open House
35th Anniversary
1958 - 1993**



September 12, 1993

WELCOME

It's a pleasure to have you with us today as we celebrate the 35th anniversary of the Omaha Works.

As you tour our shops and offices, you will note big changes from how we operated even as recently as five years ago, when we held our last open house. But then, I don't have to tell you that change has always been a common denominator in our business as we constantly strive to improve and meet the new needs of our customers.

Some changes of particular note:

- *Major remodeling and floor plan changes in both Buildings 30 (copper apparatus) and 50 (electronic wire and cable, or EW&C) — Cleaner and brighter work environments; manufacturing processes designed for smoother work flow, and keeping the human factor in mind; smaller inventories within work areas.

- *AT&T Bell Laboratories facilities on Works premises.

- *Quality improvement team (QIT) story boards that illustrate specific problems being addressed in work areas, and solutions that are being employed.

- *International shipping areas in both Buildings 30 and 50, where products are packed and shipped directly to our off-shore customers—a prominent example of how our business is expanding globally.

This is a wonderful opportunity for all employees and their families to get together and share in the pride of a successful 35 years. As a newcomer to the Omaha Works, I'm personally looking forward to meeting many of you. Thanks for coming out today and making this a celebration we won't forget in the years to come.

John Heindel
Copper Apparatus & Wire
Vice-President

HOSTS AND HOSTESSES

You'll probably recognize the greeters at the front door and the tour guides: They are Omaha Works employees and retirees. Don't hesitate to ask them for assistance. Each will wear special ribbons so they will be easy to identify.

SAFETY

To ensure your safety, please stay on the main aisles when touring our buildings. And remember, smoking is allowed *only* in designated smoking areas outside in the courtyard (adjacent to building entrances).

FIRST AID

A first aid station has been set up in Building 40, located on the north end of the courtyard. The Works Fire and Rescue Brigade crew will be on duty, ready to handle everything from scratches to emergencies. Should you need help, notify a host or hostess for direction.

LOST AND FOUND

The main lobby is the central point for lost and found articles. Should you find or lose something, contact a host or hostess for assistance.

SPECIAL ATTRACTIONS

Entertainment for all — Entertainment from Las Vegas will perform stage shows at 1, 3 and 5 p.m. You won't want to miss it! Also watch for the Corny Clowns who will be distributing goodies, and face painters will be demonstrating their craft.

Antique/classic car display — This collection should bring back a lot of memories. Models on display (weather permitting) are the pride and joy of Works employees. Look but don't touch!

ETOP Computer Classroom — On your tour of the offices and shops, be sure to check out all of the new equipment in the Enhanced Training Opportunities Program (ETOP) computer classroom in the main cafeteria. A joint project of IBEW and AT&T, ETOP provides facilities, equipment and instructors for all union-represented employees.

Activities displays — The Cornhusker Pioneers and WEOMA Club groups invite you to check out their year-round activities at displays set up in the main cafeteria. And while you're there, don't miss the Pioneers' permanent collection of artifacts and products from the company's earliest days. Also, the Pioneer Porch is open for business.

Screen show — Premiere showings of the Works' new multi-image production, "Manufacturing for Excellence," are scheduled in the auditorium at 30-minute intervals. The production features Works people and products. Maybe you're one of the stars!

Refreshments — You may get the "hungries" touring the facilities. No matter. There are hotdogs, chips, beverages, and anniversary cake for everyone.

Anniversary mementos — Gifts for children and adults may be picked up at the east and west exits as you leave.

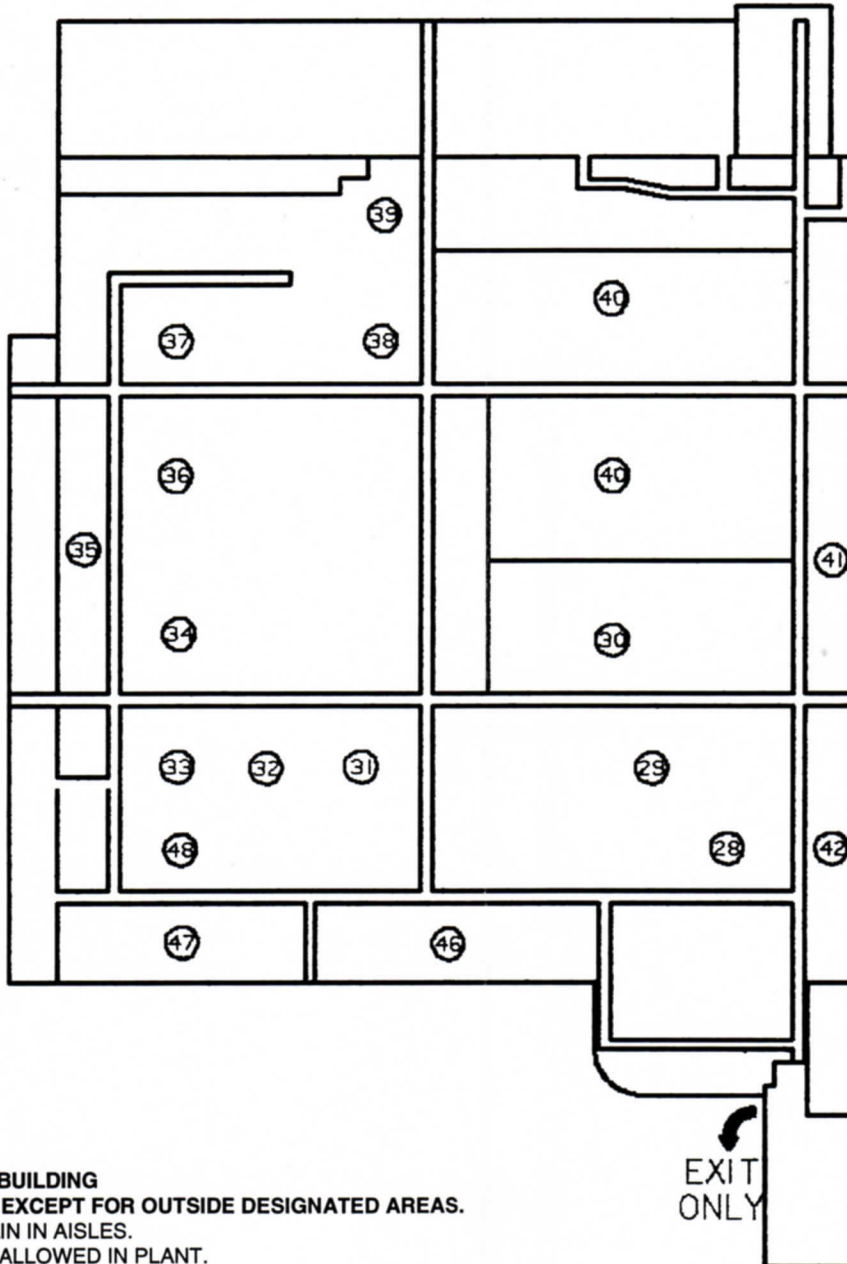
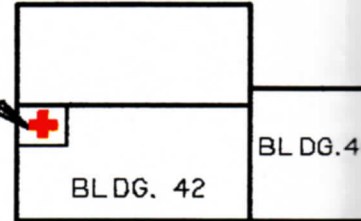
OMAHA WORKS — 35 YEARS

SUNDAY SEPTEMBER 12, 199

- 1 710 CONN ASSEMBLY
- 2 DSC ASSEMBLY
- 3 66, 78, 89, 93 & 112 CONN. BLKS.
- 4 CENTRAL OFFICE CONN. & PROTECTORS
- 5 D STATION WIRE
- 6 CENTRAL STORE
- 7 N & 9TYPE CABLE TERMINALS
- 8 CABINET FABRICATION
- 9 CABINET ASSEMBLY
- 10 INTERNATIONAL PACK
- 11 GOLD PLATER
- 12 INJECTION MOLDING

- 13 PRECISION APPARTUS
- 14 UNIT PROTECTORS
- 15 METAL PIECE PARTS FABRICATION
- 16 PLATING & POWDER PAINTING
- 17 METAL PIECE PARTS FABRICATION
- 18 CABINET ASSEMBLY
- 19 QUALITY ASSURANCE
- 20 CABINET FABRICATION
- 21 HIGH RISE STORAGE
- 22 SCREW MACHINES
- 23 MISCELLANEOUS CONNECTORS
- 24 CODED TOOL ASSEMBLY

FIRST AID
STATION



In the Mall.....
Hotdogs, Pop, Chips!
Cake, Punch, Coffee!

Fabulous Entertainment
Distinguished Guests!

For the KIDDIES....
Clowns, Face Painting
and Petting Zoo!

SMOKE FREE BUILDING
NO SMOKING, EXCEPT FOR OUTSIDE DESIGNATED AREAS.
PLEASE REMAIN IN AISLES.
NO CAMERAS ALLOWED IN PLANT.

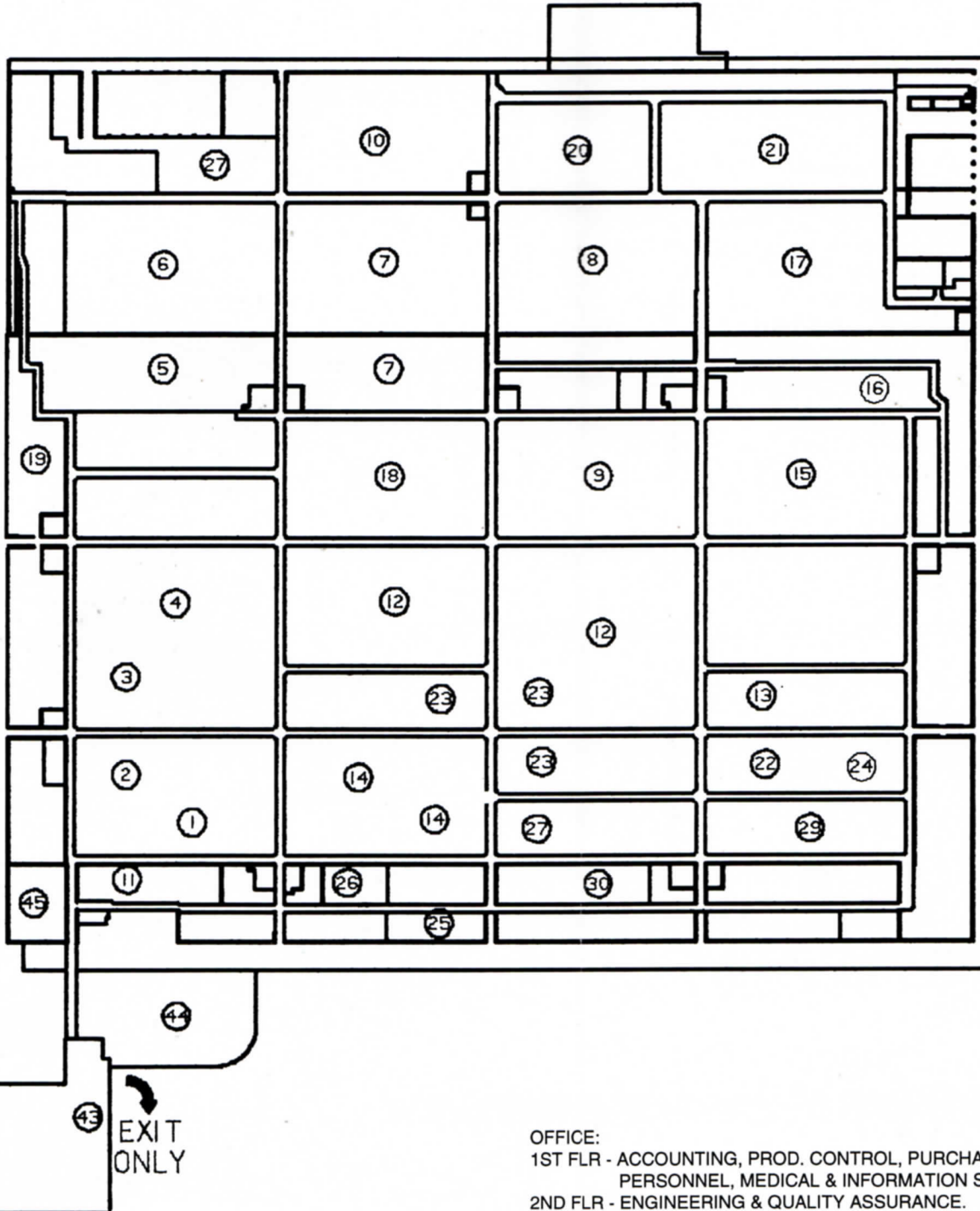


ENTER VIA MAIN L

YEARS OF SERVICE 1958 - 1993

12 NOON TO 6:00 PM

- | | |
|----------------------------------|---------------------------|
| 25 TOOL CONSTRUCTION | 37 ROD BREAKDOWN |
| 26 EDM MACHINES | 38 CENTRAL WIRE PLATING |
| 27 SHIPPING DOCK & CENTRAL STORE | 39 FINE WIRE DRAWING |
| 28 EW&C JACKETING | 40 SHEET METAL SHOPS |
| 29 PVC JACKETING & STRANDING | 41 JACKETING LINES |
| 30 REELEX | 42 SHIELDING |
| 31 EW&C MINI JACKETING | 43 PRODUCT DISPLAY CENTER |
| 32 EW&C MINI INSULATING | 44 MAIN CAFETERIA |
| 33 PVC CABLE JACKETING | 45 AUDITORIUM |
| 34 PVC CABLE STRANDING | 46 LOOSE WIRE |
| 35 PLASTIC STORAGE | 47 IRRADIATION VAULTS |
| 36 PVS WIRE INSULATING | 48 CABLE REWIND & TEST |



OFFICE:
 1ST FLR - ACCOUNTING, PROD. CONTROL, PURCHASING
 PERSONNEL, MEDICAL & INFORMATION SYSTEMS.
 2ND FLR - ENGINEERING & QUALITY ASSURANCE.
 3RD FLR - ADMINISTRATIVE OFFICES.
 L-L FLR - COMPUTER ROOM, LABS, TRAINING & PRINT SHOP.